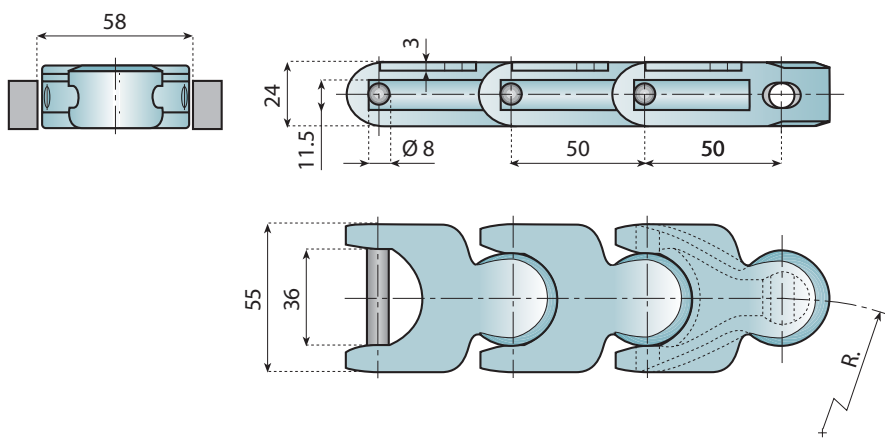
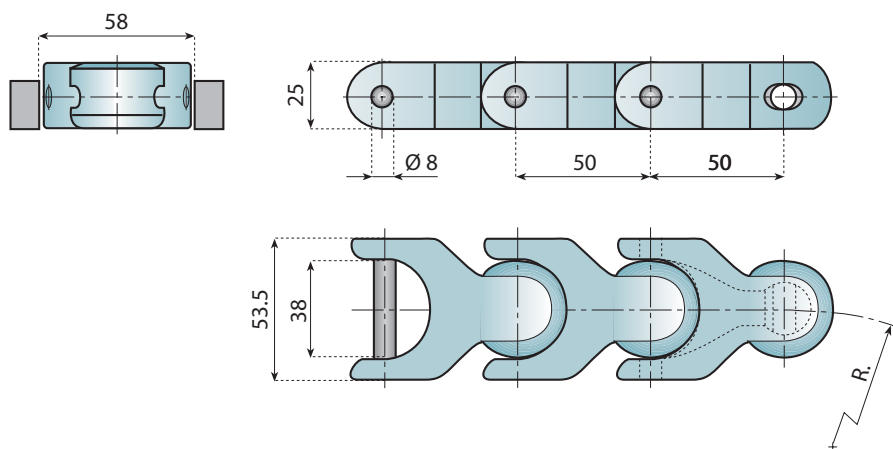


1700 MULTIFLEX 1702 CHAINS



1700



1702

Application:

- Dairy industry conveying of milk cartons.
- Elevation or lowering products with possibility of accumulation
- Preserving and mechanical industries.

Advantages:

- Multi-directional flexibility
- Horizontal e vertical directions
- Small sideflexing radius
- High working load
- Consistent high quality
- Long wear life
- Low coefficient of friction

Standard length:

61 pitches (10 Ft - 3.05 m)

- D** Acetal Resin (light grey)
- W** Acetal Resin (white)
- LF** Low Friction Acetal Resin (light brown)
- LFW** Low Friction Acetal Resin (white)
- SS** Stainless Steel



For chains material see pages 18 - 19



For corner tracks see page 225



For sprockets type see pages 316 - 317



For straight tracks see page 236



For turning disks see pages 326 → 330



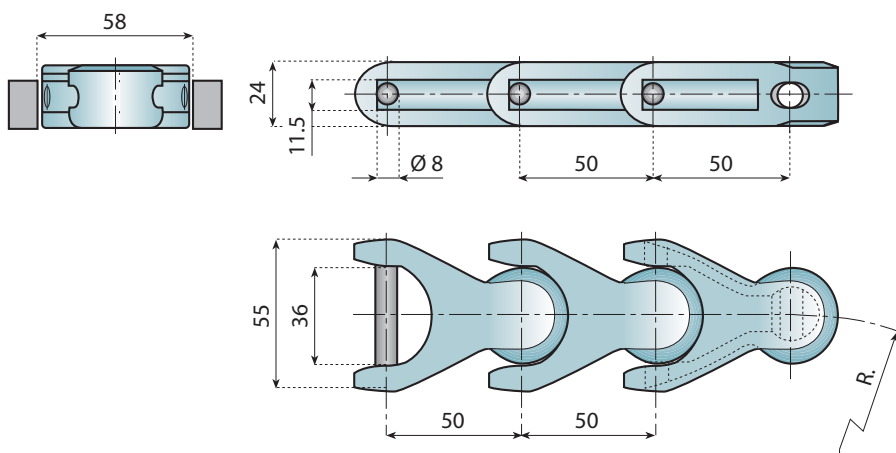
For chemical resistance see pages 336 - 337

CHAIN REF.	CODE	Material		R min.	Breaking Load N	Weight Kg/m
		Plate	Pin			
D-1700	11950	D	SS	125	8500	1.25
W-1700	11951	W				
LF-1700	11952	LF				
LFW-1700	11953	LFW				
NG-1700	11948	NG				
D-1702	11949	D	SS	140	10500	1.40
LF-1702	11954	LF				
LFW-1702	11955	LFW				

HMGK 50 FN MULTIFLEX HMGK 50 CHAINS



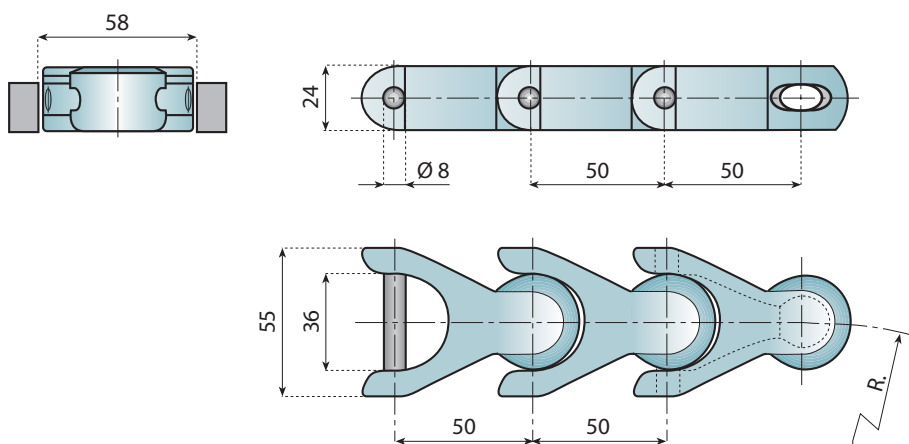
HMGK 50 FN is identical to Series 1700 Chains but has no overlapping top plate



HMGK 50 FN



HMGK 50 is identical to Series 1700 Chains but does not have sideslots or overlapping top plate



HMGK 50

Application:

- Dairy industry conveying of milk cartons.
- Elevation or lowering products with possibility of accumulation
- Preserving and mechanical industries.

Advantages:

- Multi-directional flexibility
- Horizontal e vertical directions
- Small sideflexing radius
- High working load
- Consistent high quality
- Long wear life
- Low coefficient of friction

Standard length:

61 pitches (10 Ft - 3.05 m)

D Acetal Resin (light grey)

W Acetal Resin (white)

SS Stainless Steel

MATERIAL For chains material see pages 18 - 19

For sprockets type see pages 316 - 317

For turning disks see pages 326 → 330

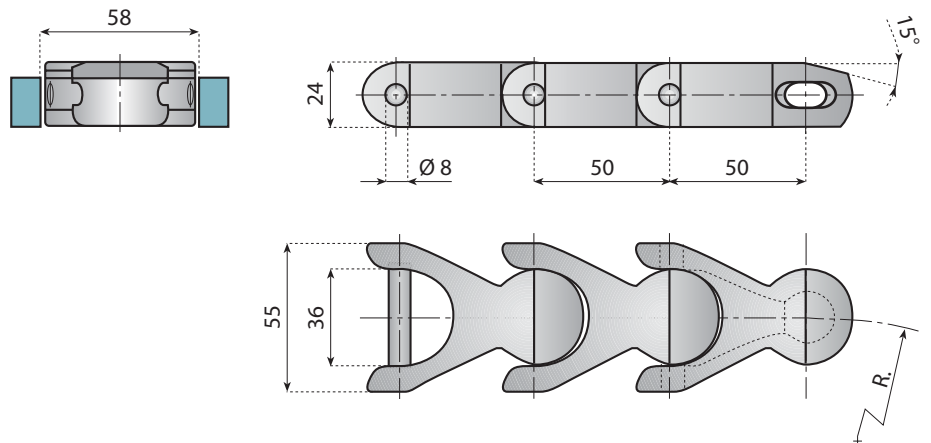
For corner tracks see page 225

For straight tracks see page 236

For chemical resistance see pages 336 - 337

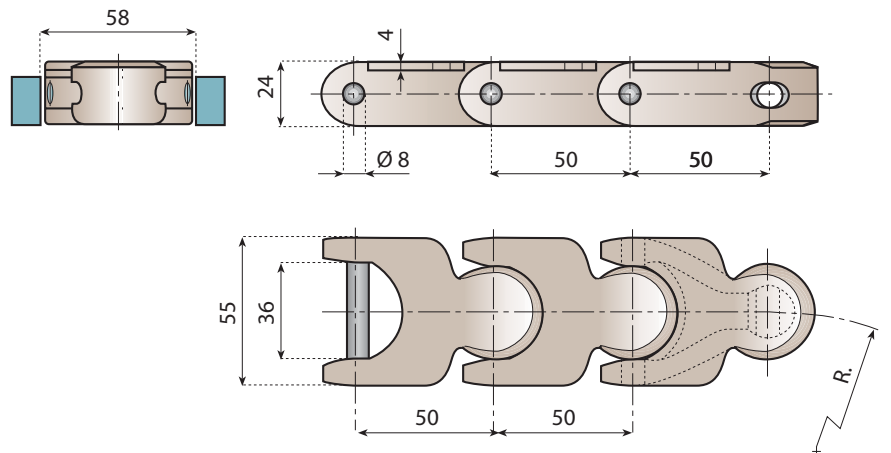
CHAIN REF.	CODE	Material		R min.	Breaking Load N	Weight Kg/m
		Plate	Pin			
W-HMGK 50 FN	11961	W	SS	130	8500	1.25
D-HMGK 50	11962	D		145		1.35
W-HMGK 50	11963	W		145		1.35

HMGK 50 MS MULTIFLEX HMGK 50 P CHAINS



HMGK 50 MS

HMGK 50 MS is identical to series HMGK 50 but as an additional feature a bevelled top plate



HMGK 50 P

HMGK 50 P identical to series 1700 chain but has no sideslats for guiding

Application:

- Dairy industry conveying of milk cartons.
- Elevation or lowering products with possibility of accumulation
- Preserving and mechanical industries.

Advantages:

- Multi-directional flexibility
- Horizontal e vertical directions
- Small sideflexing radius
- High working load
- Consistent high quality
- Long wear life
- Low coefficient of friction

Standard length:

61 pitches (10 Ft - 3.05 m)

D Acetal Resin (light grey)

LF Low Friction Acetal Resin (light brown)

SS Stainless Steel

MATERIAL For chains material see pages 18 - 19

For sprockets type see pages 316 - 317

For turning disks see pages 326 → 330

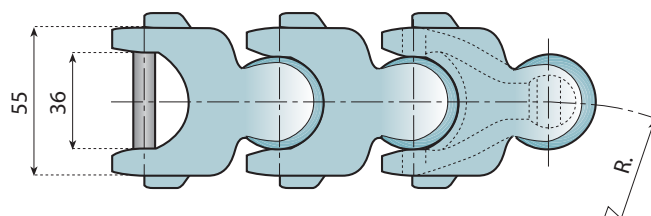
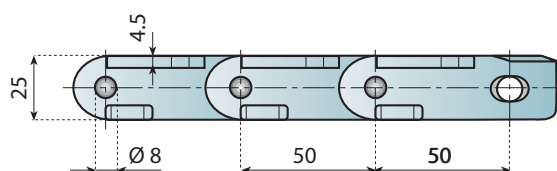
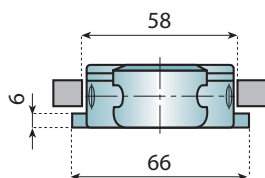
For corner tracks see page 225

For straight tracks see page 236

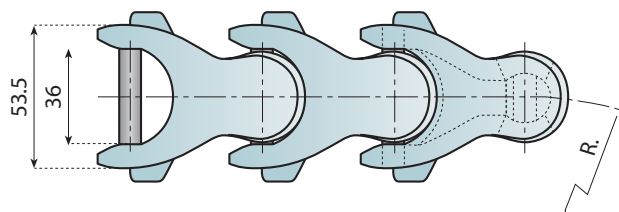
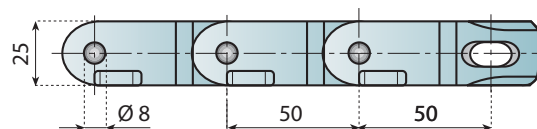
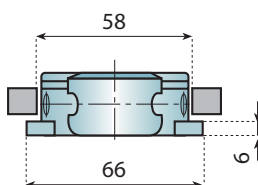
For chemical resistance see pages 336 - 337

CHAIN REF.	CODE	Material		R min.	Breaking Load N	Weight Kg/m
		Plate	Pin			
D-HMGK 50 MS	11960	D	SS	145	8500	1.35
LF-HMGK 50 P	11982	LF	SS	135	8500	1.45

1701 TAB MULTIFLEX 1701 TAB OP CHAINS



1701 TAB



1701 TAB OP

Application:

- Dairy industry conveying of milk cartons.
- Elevation or lowering products with possibility of accumulation
- Preserving and mechanical industries.

Advantages:

- Multi-directional flexibility
- Horizontal e vertical directions
- Small sideflexing radius
- High working load
- Consistent high quality
- Long wear life
- Low coefficient of friction

Standard length:

61 pitches (10 Ft - 3.05 m)

LF Low Friction Acetal Resin (light brown)

LFW Low Friction Acetal Resin (white)

SS Stainless Steel

MATERIAL For chains material see pages 18 - 19

For sprockets type see pages 316 - 317

For turning disks see pages 326 → 330

For corner tracks see page 225

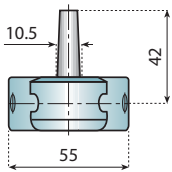
For straight tracks see page 236

For chemical resistance see pages 336 - 337

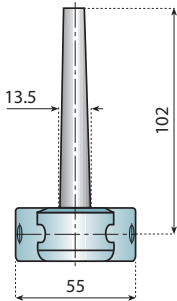
CHAIN REF.	CODE	Material		R min.	Breaking Load N	Weight Kg/m
		Plate	Pin			
LF-1701 TAB	11956	LF	SS	135	8500	1.45
LFW-1701 TAB	11957	LFW				
LF-1701 TAB OP	11958	LF	SS	125	8500	1.40
LFW-1701 TAB OP	11959	LFW				

1701 TAB OP M MULTIFLEX CHAINS WITH PUSHER

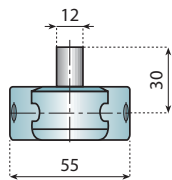
1702 M



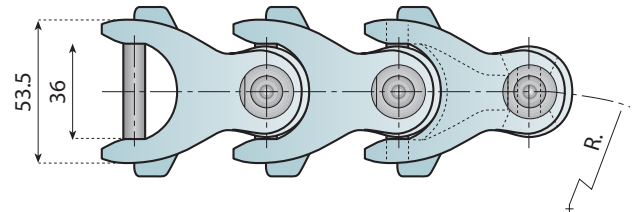
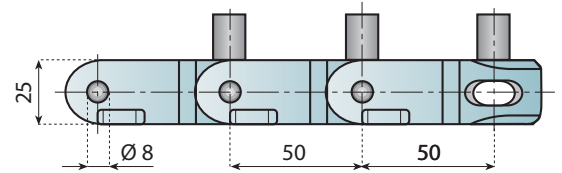
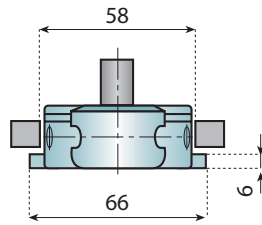
M1 (pusher white)



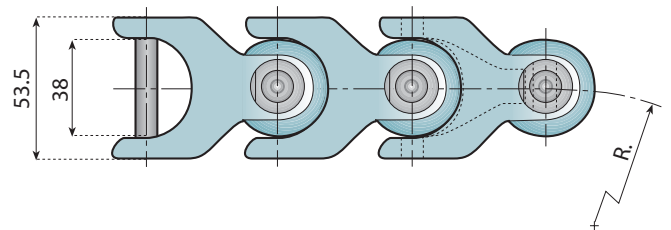
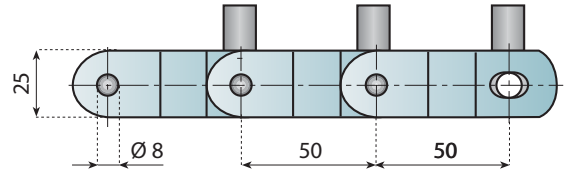
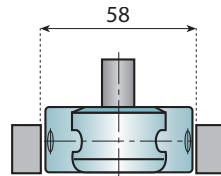
M2 (pusher white)



M3 (pusher white)



1701 TAB OP M



1702 M

Application:

- Dairy industry conveying of milk cartons.
- Elevation or lowering products
- Preserving and mechanical industries.

Advantages:

- Multi-directional flexibility
- Horizontal e vertical directions
- Small sideflexing radius
- High working load
- Consistent high quality
- Long wear life
- Low coefficient of friction

Standard length:

61 pitches (10 Ft - 3.05 m)



For chains material see pages 18 - 19



For corner tracks see page 225



For sprockets type see pages 316 - 317



For straight tracks see page 236



For turning disks see pages 326 → 330



For chemical resistance see pages 336 - 337

LFW

Low Friction Acetal Resin (white)

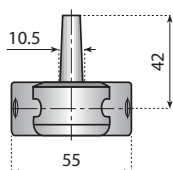
SS

Stainless Steel

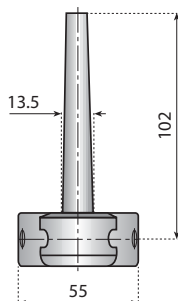
CHAIN REF.	CODE	Material		Pusher type	R min.	Breaking Load N	Weight Kg/m
		Plate	Pin				
LFW-1701 TAB OP M1	11964	LFW	SS	M1	125	8500	2.0
LFW-1701 TAB OP M2	11965			M2			
LFW-1701 TAB OP M3	11966			M3			
LFW-1702 M1	11967	LFW	SS	M1	140	10500	2.0
LFW-1702 M2	11968			M2			
LFW-1702 M3	11969			M3			

HMGK 50 M MULTIFLEX CHAINS WITH PUSHER

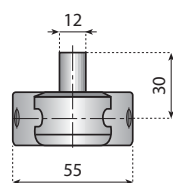
HMGK 50 TAB M



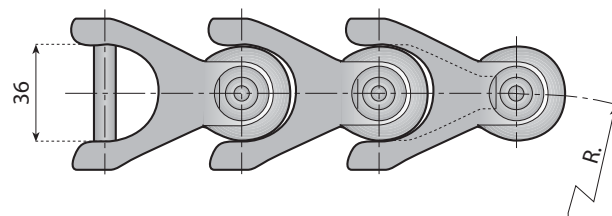
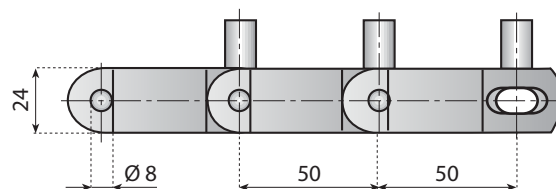
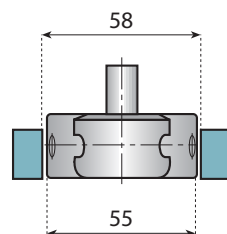
M1 (pusher white)



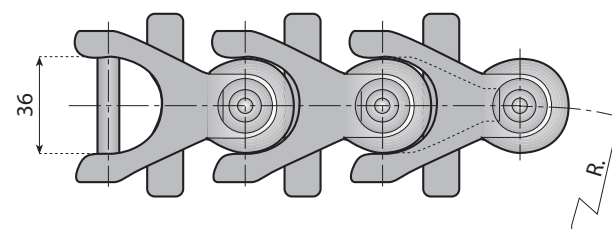
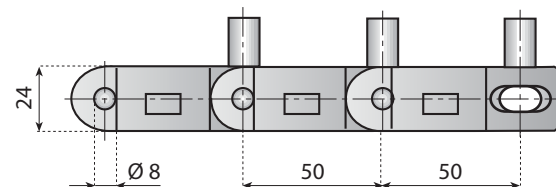
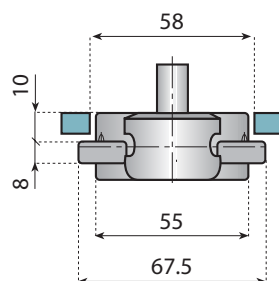
M2 (pusher white)



M3 (pusher white)



HMGK 50 M



HMGK 50 TAB M

Application:

- Dairy industry conveying of milk cartons.
- Elevation or lowering products
- Preserving and mechanical industries.

Advantages:

- Multi-directional flexibility
- Horizontal e vertical directions
- Small sideflexing radius
- High working load
- Consistent high quality
- Long wear life
- Low coefficient of friction

Standard length:

61 pitches (10 Ft - 3.05 m)

W Acetal Resin (white)

SS Stainless Steel

MATERIAL For chains material see pages 18 - 19

For sprockets type see pages 316 - 317

For turning disks see pages 326 → 330

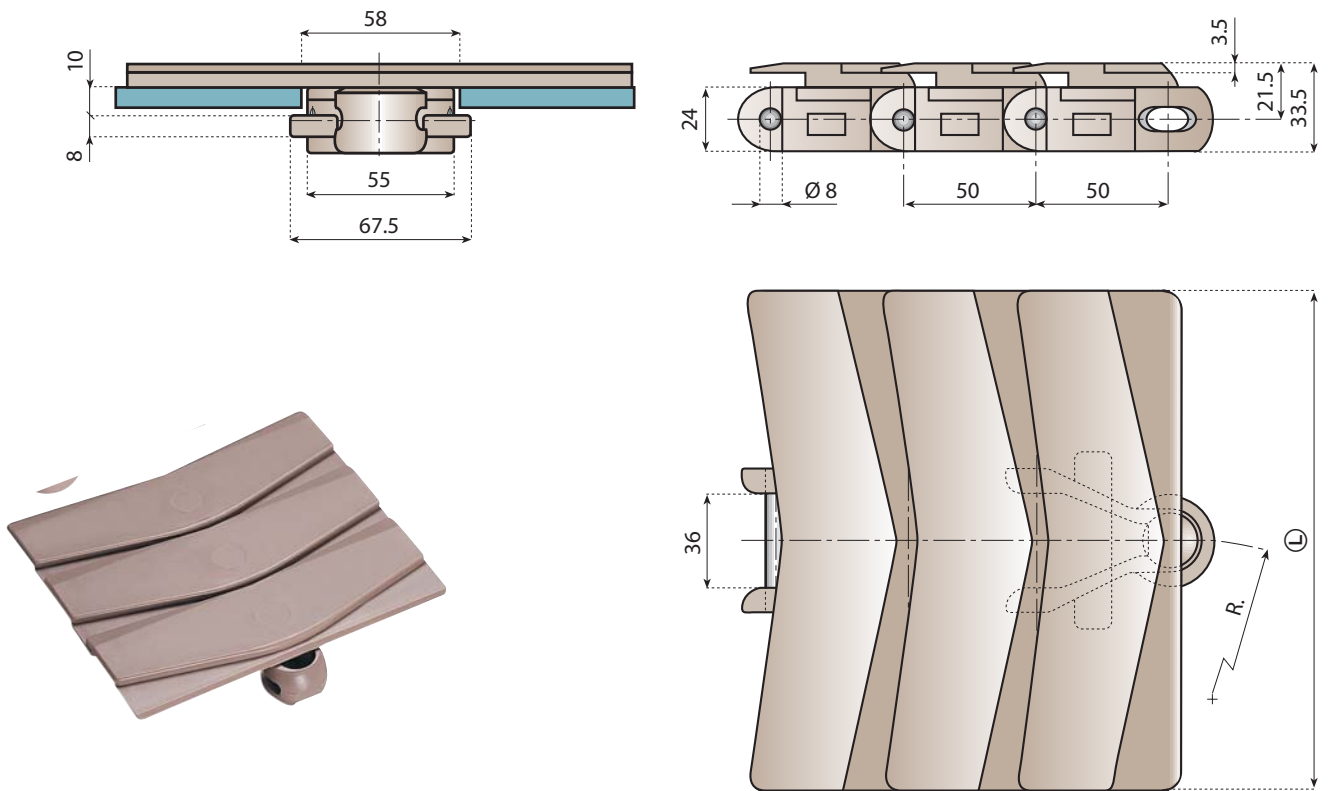
For corner tracks see page 224 - 225

For straight tracks see page 236 - 238

For chemical resistance see pages 336 - 337

CHAIN REF.	CODE	Material		Pusher type	R min.	Breaking Load N	Weight Kg/m
		Plate	Pin				
W HMGK 50 M1	11970	W	SS	M1	145	8500	2.0
W HMGK 50 M2	11971			M2			2.3
W HMGK 50 M3	11972			M3			1.6
W HMGK 50 TAB M1	11973	W	SS	M1	160	8500	2.0
W HMGK 50 TAB M2	11974			M2			2.3
W HMGK 50 TAB M3	11975			M3			1.6

HMGK 50 TAB P OVERLAPPING TOP PLATE MULTIFLEX CHAINS



HMGK 50 TAB P

Application:

- Dairy industry conveying of milk cartons.
- Elevation or lowering products with possibility of accumulation
- Preserving and mechanical industries.

Advantages:

- Multi-directional flexibility
- Horizontal e vertical directions
- High working load
- Consistent high quality
- Long wear life
- Low coefficient of friction

Standard length:


61 pitches (10 Ft - 3.05 m)

 For chains material see pages 18 - 19

 For sprockets type see pages 316 - 317

 For corner tracks see page 226

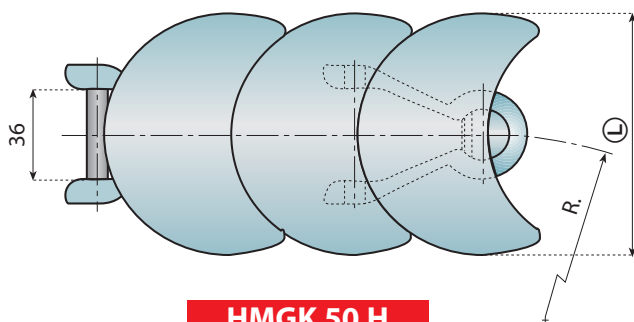
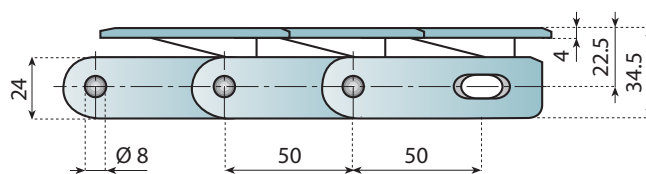
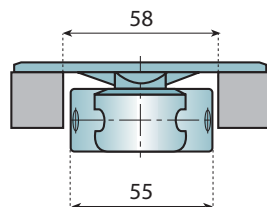
 For straight tracks see page 237

 For chemical resistance see pages 336 - 337

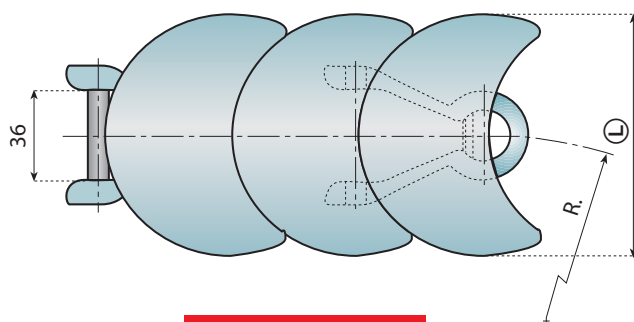
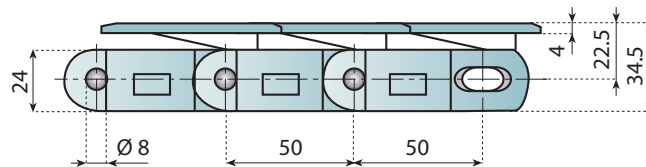
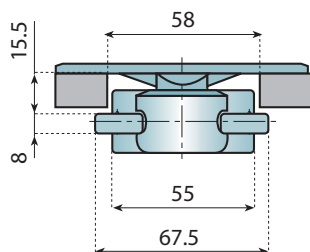
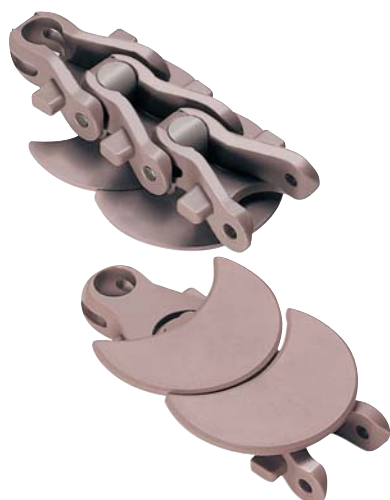
LF	Low Friction Acetal Resin (Ibrown)
SS	Stainless Steel

CHAIN REF.	CODE	Material		R min.	L mm	Breaking Load N	Weight Kg/m
		Plate	Pin				
LF-HMGK 50 TAB P1	11976	LF	SS	550	191	10500	2.5
LF-HMGK 50 TAB P2	11977				254		2.9

HMGK 50 H MULTIFLEX HMGK 50 TAB H CHAINS



HMGK 50 H



HMGK 50 TAB H

Application:

- Dairy industry conveying of milk cartons.
- Elevation or lowering products with possibility of accumulation
- Preserving and mechanical industries.

Advantages:

- Multi-directional flexibility
- Horizontal e vertical directions
- Small sideflexing radius
- High working load
- Consistent high quality
- Long wear life
- Low coefficient of friction

Standard length:

61 pitches (10 Ft - 3.05 m)

D Acetal Resin (light grey)

LFW Low Friction Acetal Resin (white)

SS Stainless Steel

MATERIAL For chains material see pages 18 - 19

For sprockets type see pages 316 - 317

For turning disks see pages 326 → 330

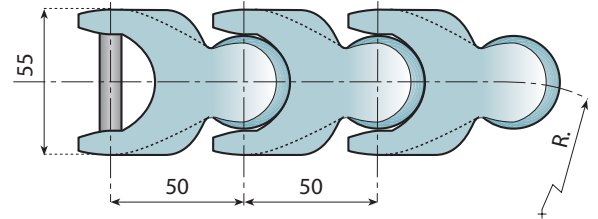
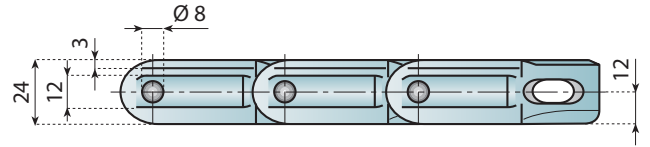
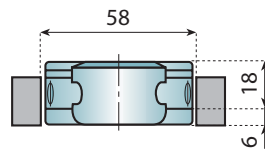
For corner tracks see page 226

For straight tracks see page 237

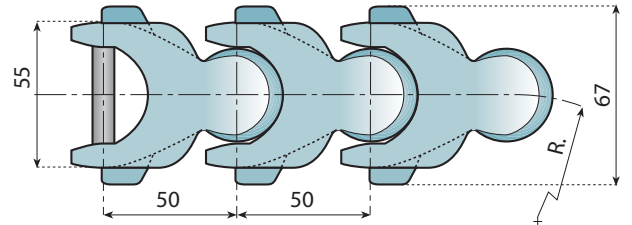
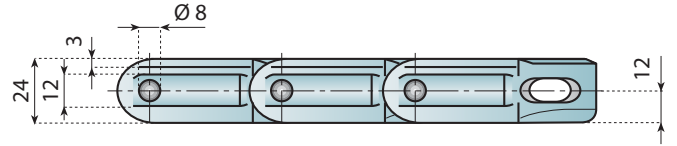
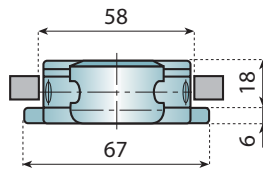
For chemical resistance see pages 336 - 337

CHAIN REF.	CODE	Material		R min.	L mm	Breaking Load N	Weight Kg/m
		Plate	Pin				
D-HMGK 50 H1	11880	D		160	95	10500	1.92
D-HMGK 50 H2	11978			500	190		2.35
LFW-HMGK 50 H1	11890	LFW		160	95		1.92
LFW-HMGK 50 H2	11979			500	190		2.35
D-HMGK 50 TAB H1	11900	D	SS	160	95		1.92
D-HMGK 50 TAB H2	11980			500	190		2.35
LFW-HMGK 50 TAB H1	11910	LFW		160	95	1.92	
LFW-HMGK 50 TAB H2	11981			500	190	2.35	

7000 MULTIFLEX 7000 TAB CHAINS



7000



7000 TAB

Application:

- Dairy industry conveying of milk cartons.
- Elevation or lowering products with possibility of accumulation
- Preserving and mechanical industries.

Advantages:

- Multi-directional flexibility
- Horizontal e vertical directions
- Small sideflexing radius
- High working load
- Consistent high quality
- Long wear life
- Low coefficient of friction

Standard length:

61 pitches (10 Ft - 3.05 m)

D Grey Acetal Resin

LFW Low Friction Acetal Resin White

ZN Zinc Plated Steel

SS Stainless Steel

MATERIAL For chains material see pages 18 - 19

For corner tracks see page 225

For sprockets type see pages 316 - 317

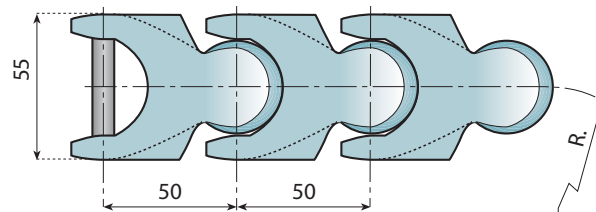
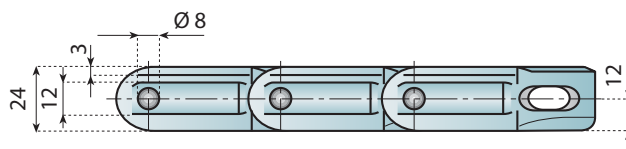
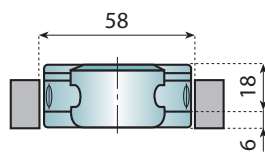
For straight tracks see page 236

For turning disks see pages 326 → 330

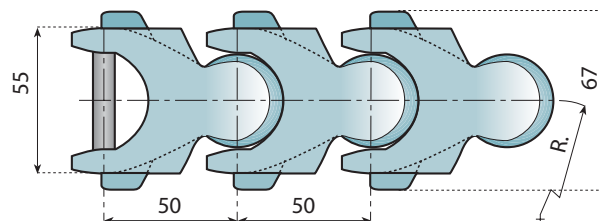
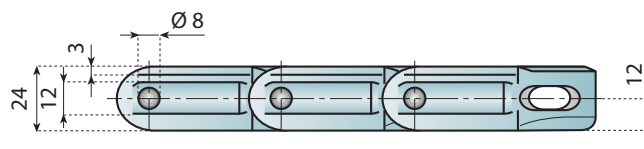
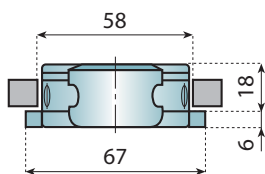
For chemical resistance see pages 336 - 337

CHAIN REF.	CODE	Material		R min.	Weight Kg/m
		Plate	Pin		
D-7000 SS	11344	D	SS	140	1.27
D-7000 ZN	11346		ZN		
LFW-7000	11347	LFW	SS		
D-7000 TAB SS	11253	D	SS	140	1.32
D-7000 TAB ZN	11254		ZN		
LFW-7000 TAB	11255		LFW		

7001 MULTIFLEX 7001 TAB CHAINS



7001



7001 TAB

Application:

- Dairy industry conveying of milk cartons.
- Elevation or lowering products with possibility of accumulation
- Preserving and mechanical industries.

Advantages:

- Multi-directional flexibility
- Horizontal e vertical directions
- Small sideflexing radius
- High working load
- Consistent high quality
- Long wear life
- Low coefficient of friction

Standard length:

61 pitches (10 Ft - 3.05 m)

D Grey Acetal Resin

LFW Low Friction Acetal Resin White

ZN Zinc Plated Steel

SS Stainless Steel

MATERIAL For chains material see pages 18 - 19

For sprockets type see pages 316 - 317

For turning disks see pages 326 → 330

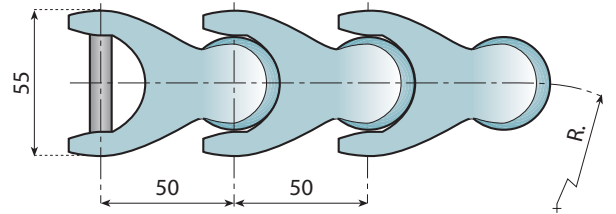
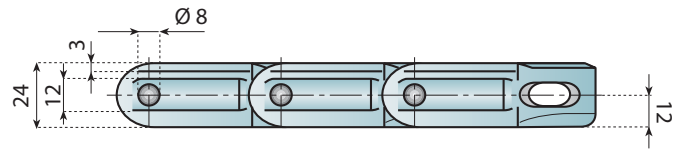
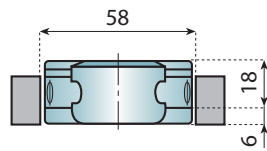
For corner tracks see page 225

For straight tracks see page 236

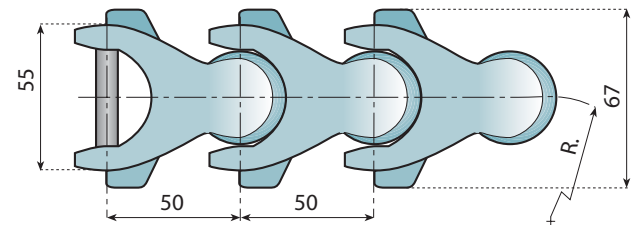
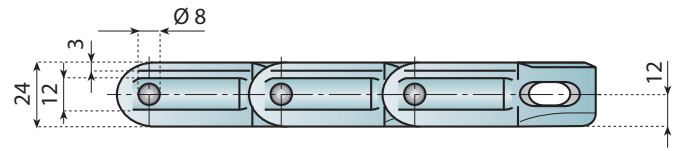
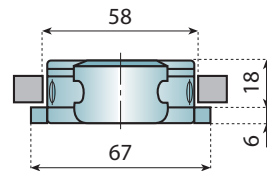
For chemical resistance see pages 336 - 337

CHAIN REF.	CODE	Material		R min.	Weight Kg/m
		Plate	Pin		
D-7001 SS	11348	D	SS	140	1.28
D-7001 ZN	11350		ZN		
LFW-7001	11351	LFW	SS		
D-7001 TAB SS	11256	D	SS	140	1.33
D-7001 TAB ZN	11257		ZN		
LWF-7001 TAB	11258		LFW		

7005 MULTIFLEX 7005 TAB CHAINS



7005



7005 TAB

Application:

- Dairy industry conveying of milk cartons.
- Elevation or lowering products with possibility of accumulation
- Preserving and mechanical industries.

Advantages:

- Multi-directional flexibility
- Horizontal e vertical directions
- Small sideflexing radius
- High working load
- Consistent high quality
- Long wear life
- Low coefficient of friction

Standard length:

61 pitches (10 Ft - 3.05 m)

D Grey Acetal Resin

LFW Low Friction Acetal Resin White

ZN Zinc Plated Steel

SS Stainless Steel

MATERIAL For chains material see pages 18 - 19

For sprockets type see pages 316 - 317

For turning disks see pages 326 → 330

For corner tracks see page 225

For straight tracks see page 236

For chemical resistance see pages 336 - 337

CHAIN REF.	CODE	Material		R min.	Weight Kg/m
		Plate	Pin		
D-7005 SS	11352	D	SS	140	1.25
D-7005 ZN	11353		ZN		
LFW-7005	11355	LFW	SS		
D-7005 TAB SS	11250	D	SS	140	1.30
D-7005 TAB ZN	11251		ZN		
LFW-7005 TAB	11252		LFW		