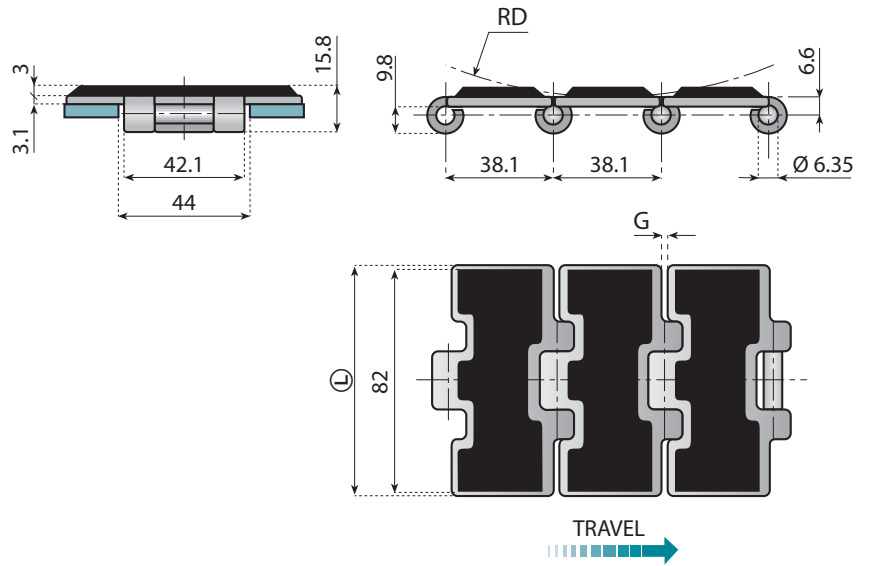
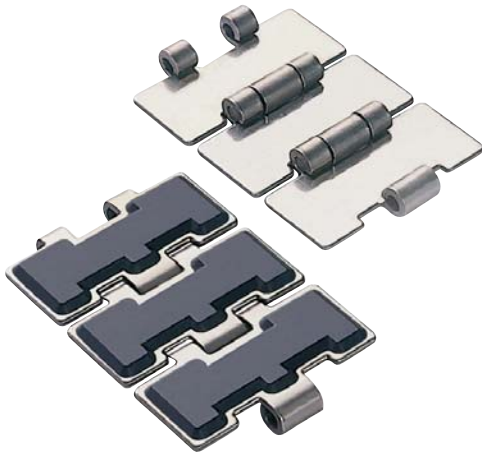


Series 815 VG - 815 TAB VG - 805 VG - 8157 VG

**Straight running steel chains
with high friction surface**

815 VG STRAIGHT RUNNING CHAINS SINGLE HINGE with rubber pads



STRAIGHT RUNNING CHAINS SINGLE HINGE with rubber pads Series 815 VG

Characteristics:

Flat top chains with vulcanized NBR rubber.

Standard length:

80 pitches (10 ft. - 3.048 m).


Advantages:


- High resistance to wear and tearing
- Working temperature from -30°C to $+120^{\circ}\text{C}$
- High resistance to oil, grease and acids.
- Conveyance up to max 20°

EXTRA PLUS Extra Plus Stainless Steel

NBR N.B.R. Rubber

MATERIAL For chains material see pages 18 - 19

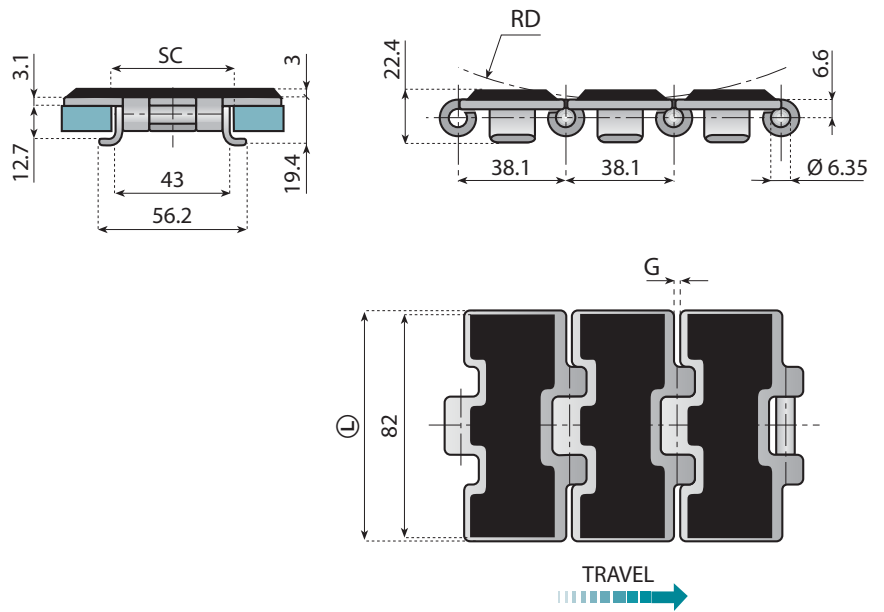
 For sprockets type see pages 240 → 248

 For chemical resistance see pages 336 - 337

CHAIN - REF.	CODE	Material		Yield Point N	Width L		G mm	RD mm	Weight Kg/m
		Chain	Rubber		mm	inch.			
SSER 815 K325 VG	10500	EXTRA PLUS	NBR	8500	82.5	3.1/4	2.8	75	2.8

Breaking Load according to Standard ISO 4348 - DIN 8153

815 TAB VG STRAIGHT RUNNING CHAINS SINGLE HINGE with tabs and rubber pads



STRAIGHT RUNNING CHAINS with tabs and rubber pads Series 815 TAB VG

Characteristics:

Flat top chains with vulcanized NBR rubber.

Standard length:


80 pitches (10 ft. - 3.048 m).


Advantages:


- High resistance to wear and tearing
- Working temperature from -30°C to +120°C
- High resistance to oil, grease and acids.
- Conveyance up to max 20°
- Reduces friction on the return section of the conveyor.

EXTRA PLUS	Extra Plus Stainless Steel
NBR	N.B.R. Rubber

MATERIAL For chains material see page 18

 For sprockets type see pages 274 → 281

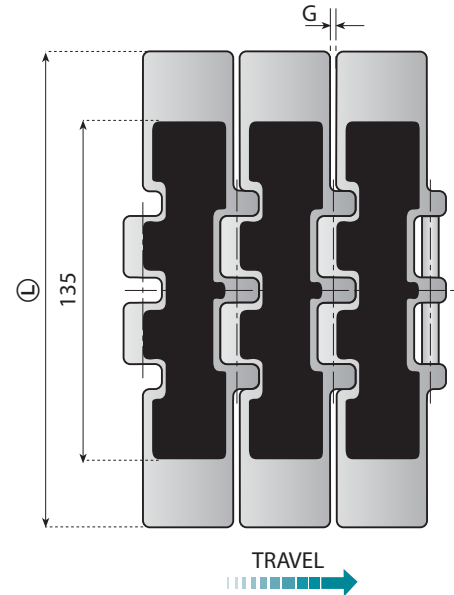
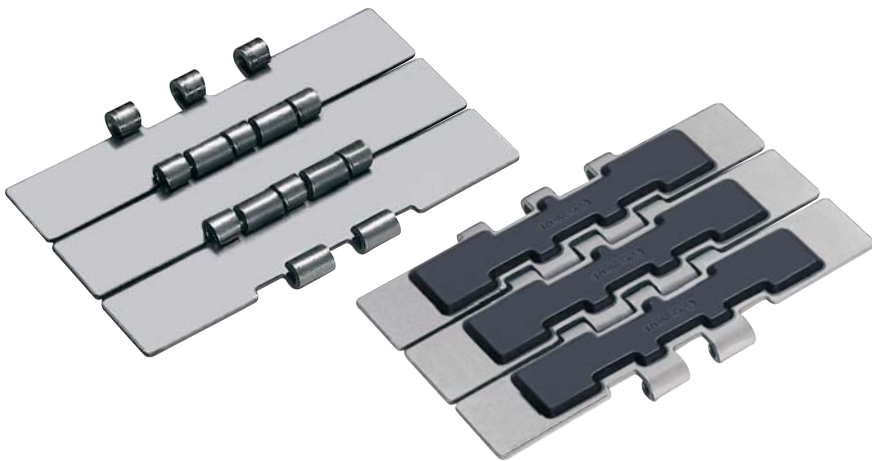
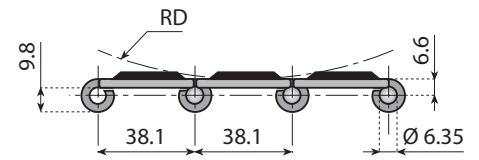
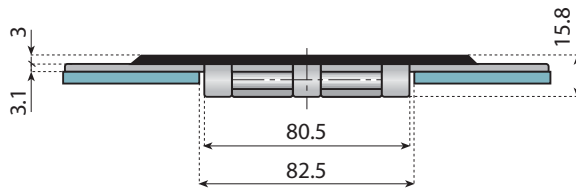
 For straight tracks see pages 228 → 233

 For chemical resistance see pages 336 - 337

CHAIN - REF.	CODE	Material		Yield Point N	Width L		G mm	RD mm	Weight Kg/m
		Chain	Rubber		mm	inch.			
SSER 815 TAB K325 VG	10510	EXTRA PLUS	NBR	8500	82.5	3 1/4	2.8	75	3.4

Breaking Load according to Standard ISO 4348 - DIN 8153

805 VG STRAIGHT RUNNING CHAINS DOUBLE HINGE with rubber pads



STRAIGHT RUNNING CHAINS DOUBLE HINGE with rubber pads Series 805 VG

Characteristics:

Flat top chains with vulcanized NBR rubber.

Standard length:

80 pitches (10 ft. - 3.048 m).


Advantages:


- High resistance to wear and tearing
- Working temperature from -30°C to +120°C.
- High resistance to oil, grease and acids.
- Conveyance up to max 20°

EXTRA PLUS Extra Plus Stainless Steel

NBR N.B.R. Rubber

 For chains material see pages 18 - 19

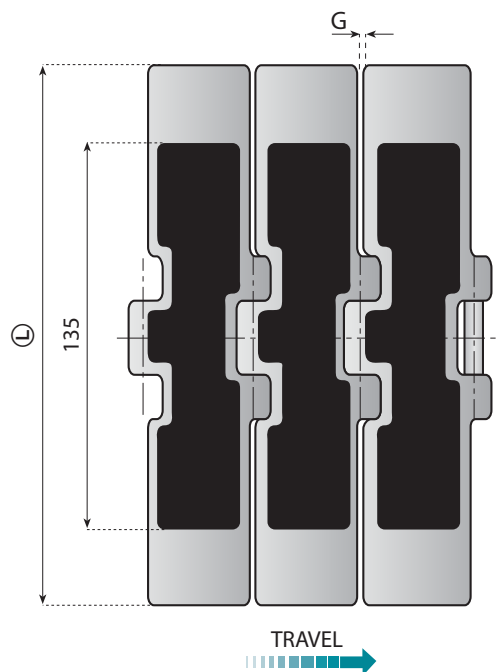
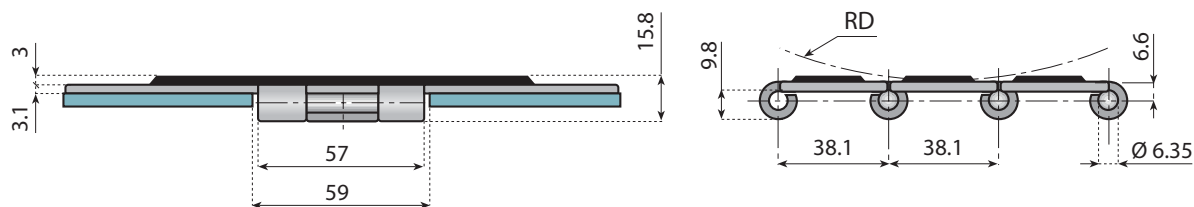
 For sprockets type see pages 254 → 260

 For chemical resistance see pages 336 - 337

CHAIN - REF.	CODE	Material		Yield Point N	Width L		G mm	RD mm	Weight Kg/m
		Chain	Rubber		mm	inch.			
SSE 805 K750 VG	10502	EXTRA PLUS	NBR	15000	190.5	7.1/2	1.8	150	6.2

Breaking Load according to Standard ISO 4348 - DIN 8153

8157 VG STRAIGHT RUNNING CHAINS - HEAVY DUTY SINGLE HINGE with rubber pads



STRAIGHT RUNNING CHAINS HEAVY DUTY SINGLE HINGE with rubber pads Series 8157 VG

Characteristics:

Flat top chains with vulcanized NBR rubber.

Standard length:

80 pitches (10 ft. - 3.048 m).

Advantages:

- High resistance to wear and tearing
- Working temperature from -30°C to +120°C.
- High resistance to oil, grease and acids.
- Conveyance up to max 20°

NEWS SERIES!

This chain is part of the new series of stainless steel and plastic chains having a hinge a width of 57 mm.

Versions:

series

STAINLESS STEEL CHAINS:

Straight running chain	8157
Sideflexing chain for magnetic system	8857 M
Straight running chain with rubber pad	8157 VG
Sideflexing chain with rubber pad for magnetic system	8857 M VG

PLASTIC CHAINS:

Straight running chain	8257
Sideflexing chain for magnetic system	882 M
Straight running chain with accumulation rollers	LBP 8257
Sideflexing chain with accumulation roller for magnetic system	LBP 882 M
Straight running chain with rubber pad	8257 VG
Sideflexing chain with rubber pad for magnetic system	882 M VG

MATERIAL For chains material see pages 18 - 19

For sprockets type see pages 262 → 267

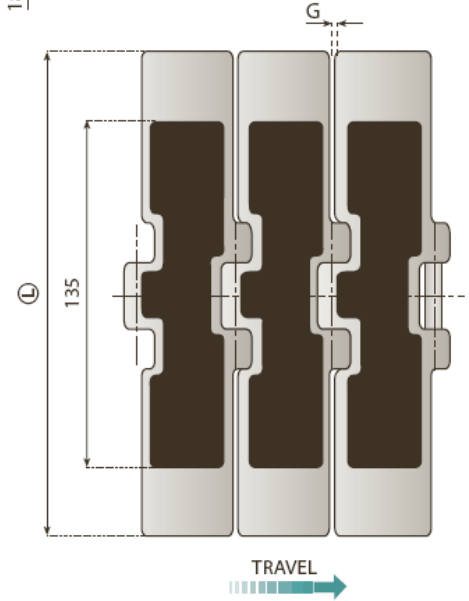
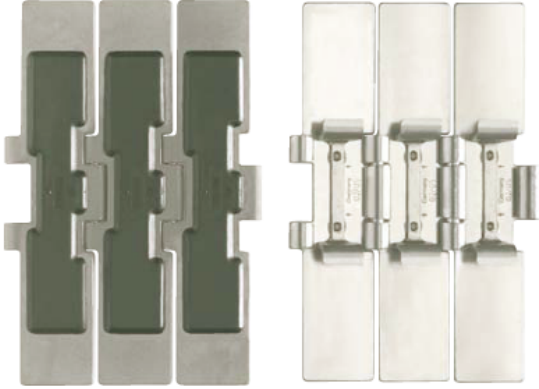
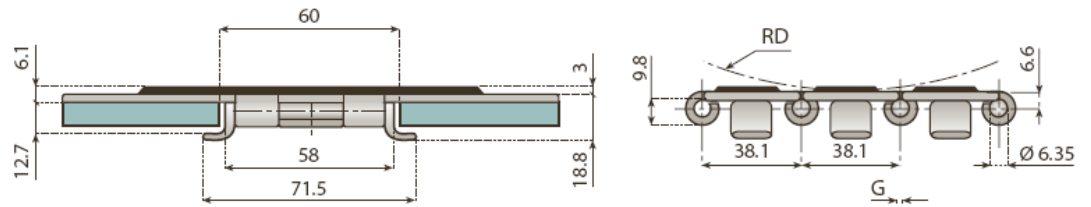
For chemical resistance see pages 336 - 337

EXTRA PLUS Extra Plus Stainless Steel **NBR** N.B.R. Rubber

CHAIN - REF.	CODE	Material		Yield Point N	Width L		G mm	RD mm	Weight Kg/m
		Chain	Rubber		mm	inch.			
SSE 8157 K750 VG	10512	EXTRA PLUS	NBR	10400	190.5	7.1/2	1.8	150	6.0

Breaking Load according to Standard ISO 4348 - DIN 8153

8157 TAB VG STRAIGHT RUNNING CHAINS - HEAVY DUTY SINGLE HINGE WITH RUBBER PADS



Characteristics:

Flat top chains with vulcanized NBR rubber. Tabs reduce friction on the return section of the conveyor.



Pages 16 - 17



Pages 250



Pages 311 → 315

CHAIN - REF.	CODE	Material		Max. working load	Width L		G mm	RD mm	Weight Kg/m
		Chain	Rubber		mm	inch.			
SSE 8157 TAB K750 VG	10514	EXTRA PLUS	NBR	10400	190.5	7½	1.8	150	7.5
SSE 8157 TAB K750 HB - VG	10513	HB							

Standard length: 80 pitches (10 ft. - 3.048 m)

Breaking Load according to Standard ISO 4348 - DIN 8153